

Caller Details

Contact:	Peta Harris	Caller Id:	3022837	Phone:	0418 108 229
Company:	Not supplied				
Address:	PO Box 107 Clarence Town NSW 2321	Email:	peta@perceptionplanning.com.au		

Dig Site and Enquiry Details

WARNING: The map below only displays the location of the proposed dig site and does not display any asset owners' pipe or cables. The area highlighted has been used only to identify the participating asset owners, who will send information to you directly.



User Reference:	309 Chichester Dam Road		
Working on Behalf of:	Private		
Enquiry Date:	Start Date:	End Date:	
21/09/2022	22/09/2022	08/10/2022	

Address:
309 Chichester Dam Road
Bendolba NSW 2420

Job Purpose:
Design

Onsite Activities:
Planning & Design

Location of Workplace:
Private

Location in Road:

- Check that the location of the dig site is correct. If not you must submit a new enquiry.
- Should the scope of works change, or plan validity dates expire, you must submit a new enquiry.
- Do NOT dig without plans. Safe excavation is your responsibility. If you do not understand the plans or how to proceed safely, please contact the relevant asset owners.

Notes/Description of Works:
Not supplied

Your Responsibilities and Duty of Care

- The lodgement of an enquiry does not authorise the project to commence. You must obtain all necessary information from any and all likely impacted asset owners prior to excavation.
- If plans are not received within 2 working days, contact the asset owners directly & quote their Sequence No.
- ALWAYS perform an onsite inspection for the presence of assets. Should you require an onsite location, contact the asset owners directly. Please remember, plans do not detail the exact location of assets.
- Pothole to establish the exact location of all underground assets using a hand shovel, before using heavy machinery.
- Ensure you adhere to any State legislative requirements regarding Duty of Care and safe digging requirements.
- If you damage an underground asset you MUST advise the asset owner immediately.
- By using this service, you agree to Privacy Policy and the terms and disclaimers set out at www.1100.com.au
- For more information on safe excavation practices, visit www.1100.com.au

Asset Owner Details

The assets owners listed below have been requested to contact you with information about their asset locations within 2 working days. Additional time should be allowed for information issued by post. It is **your responsibility** to identify the presence of any underground assets in and around your proposed dig site. Please be aware, that not all asset owners are registered with the Before You Dig service, so it is **your responsibility** to identify and contact any asset owners not listed here directly.

** Asset owners highlighted by asterisks ** require that you visit their offices to collect plans.

Asset owners highlighted with a hash # require that you call them to discuss your enquiry or to obtain plans.

Seq. No.	Authority Name	Phone	Status
216218232	Essential Energy	13 23 91	NOTIFIED
216218233	Hunter Water Corporation	1300 657 657	NOTIFIED
216218231	Telstra NSW Central	1800 653 935	NOTIFIED

END OF UTILITIES LIST



Before You Dig Australia (BYDA)

Location Information

Hunter Water Corporation
36 Honeysuckle Drive
NEWCASTLE NSW 2300

To:

Peta Harris
PO Box 107
Clarence Town NSW 2321

Enquiry Details	
Utility ID	80220
Job Number	32767596
Sequence Number	216218233
Enquiry Date	21/09/2022 02:04
Response	AFFECTED
Address	309 Chichester Dam Road Bendolba
Location in Road	
Activity	Planning and Design

Enquirer Details	
Customer ID	3022837
Contact	Peta Harris
Company	
Email	peta@perceptionplanning.com.au
Phone	+61418108229

Enquirer Responsibilities

HWC's provision, and your access to and use, of the data, maps and other information contained in HWC's response to your Before You Dig Australia (BYDA) enquiry (Information) are subject to the following terms and conditions and any additional disclaimers contained in HWC's response.

1. Nature of HWC's assets

You acknowledge and accept that:

- (a) water in HWC mains is under pressure and may cause injury or damage if a main is damaged;
- (b) HWC sewer mains can be under pressure and may cause injury or damage if a main is damaged;
- (c) HWC recycled water mains can be under pressure and may cause injury or damage if a main is damaged;
- (d) HWC services are laid at varying depths;
- (e) the Information does not include data related to property services;
- (f) HWC will seek recovery of repair costs if an HWC asset is damaged; and
- (g) all electrical services are to be considered live.

Accordingly, all persons must exercise extreme care and only use hand excavation until the exact location of all assets within a work area is established.

2. Your use of Information

You acknowledge and accept that:

- (a) neither HWC nor BYDA make any representation or give any guarantee, warranty or undertaking (express or implied) as to the currency, accuracy, completeness, effectiveness or reliability of the Information;
- (b) all Information is:
 - i. generated by an automated system based on the information you submit to the BYDA website and it is your responsibility to ensure that the dig site is properly defined in your enquiry;
 - ii. approximate, intended to be of general application and may not be suitable for your specific requirements;
 - iii. unsuitable for scaling purposes; and
 - iv. based on information available to HWC and may not show all existing structures. For example, the location of Private Sewer/Water Mains is the initial indicative location supplied to HWC. This may not be the current location of such mains and not all private mains have been supplied to HWC;
- (c) you must not solely rely on the Information when undertaking underground works;
- (d) all Information is provided for the sole purpose of assisting you to locate HWC assets before excavation (Permitted Purpose) and you must not copy, translate, modify, distribute or make derivative works of the Information except as directly required to achieve the Permitted Purpose;
- (e) all Information must be used and kept together;
- (f) your access to and use of the Information does not grant you any ownership of or intellectual property rights in the Information;
- (g) in identifying in the Information the presence or potential presence of hazardous or potentially hazardous materials in HWC assets, HWC is not representing or warranting that other HWC assets not identified in the Information as containing or potentially containing hazardous materials do not also contain such materials; and
- (h) in excavating and conducting underground works, you must do so having regard to the fact that asbestos cement pipelines may form part of HWC's water and sewer reticulation systems.

3. Your other obligations

You are responsible for, amongst other things:

- (a) exposing underground structures, including HWC assets, by pot-holing using hand-held tools or vacuum techniques to determine the precise location and extent of structures before any mechanical means of excavation are used;
- (b) protecting underground structures, including HWC assets, from damage and interference;
- (c) maintaining acceptable clearances between HWC assets and structures belonging to others;
- (d) ensuring that backfilling in the vicinity of HWC assets complies with HWC's requirements (as set out on HWC's website or otherwise communicated to you by HWC);
- (e) notifying HWC immediately of any damage caused or threat of damage to any HWC asset; and
- (f) ensuring that plans are approved by HWC (usually by stamping) prior to landscaping or building over or in the vicinity of any HWC asset.

Enquirer Responsibilities Continued

4. Disclaimer

While HWC takes reasonable care in providing details of its underground assets, due to changes in road and footway alignments and levels, the age and incompleteness of some records and the general nature of the Information, it is not possible to conclusively specify the location of all HWC underground assets, including pipes that contain or may contain hazardous materials.

ALL INFORMATION IS PROVIDED AS GENERAL GUIDANCE ONLY AND SHOULD NOT BE USED OR RELIED UPON IN SUBSTITUTION FOR SPECIALISED PROFESSIONAL INDEPENDENT ADVICE. YOU ACKNOWLEDGE AND AGREE THAT YOUR USE OF THE INFORMATION IS AT YOUR OWN RISK.

If you have any questions or concerns about the appropriateness, reliability or application of any Information you must seek advice from a relevantly qualified professional. Further, dealing with hazardous materials is potentially dangerous, and you must always seek advice where the Information provides that HWC's assets contain or may contain hazardous materials.

HWC makes no representation and gives no warranty or undertaking (express or implied) as to the currency, accuracy, completeness, effectiveness or reliability of the Information or that the Information can be used for any purpose in substitution for specialised, professional and independent advice.

5. Limitation of liability

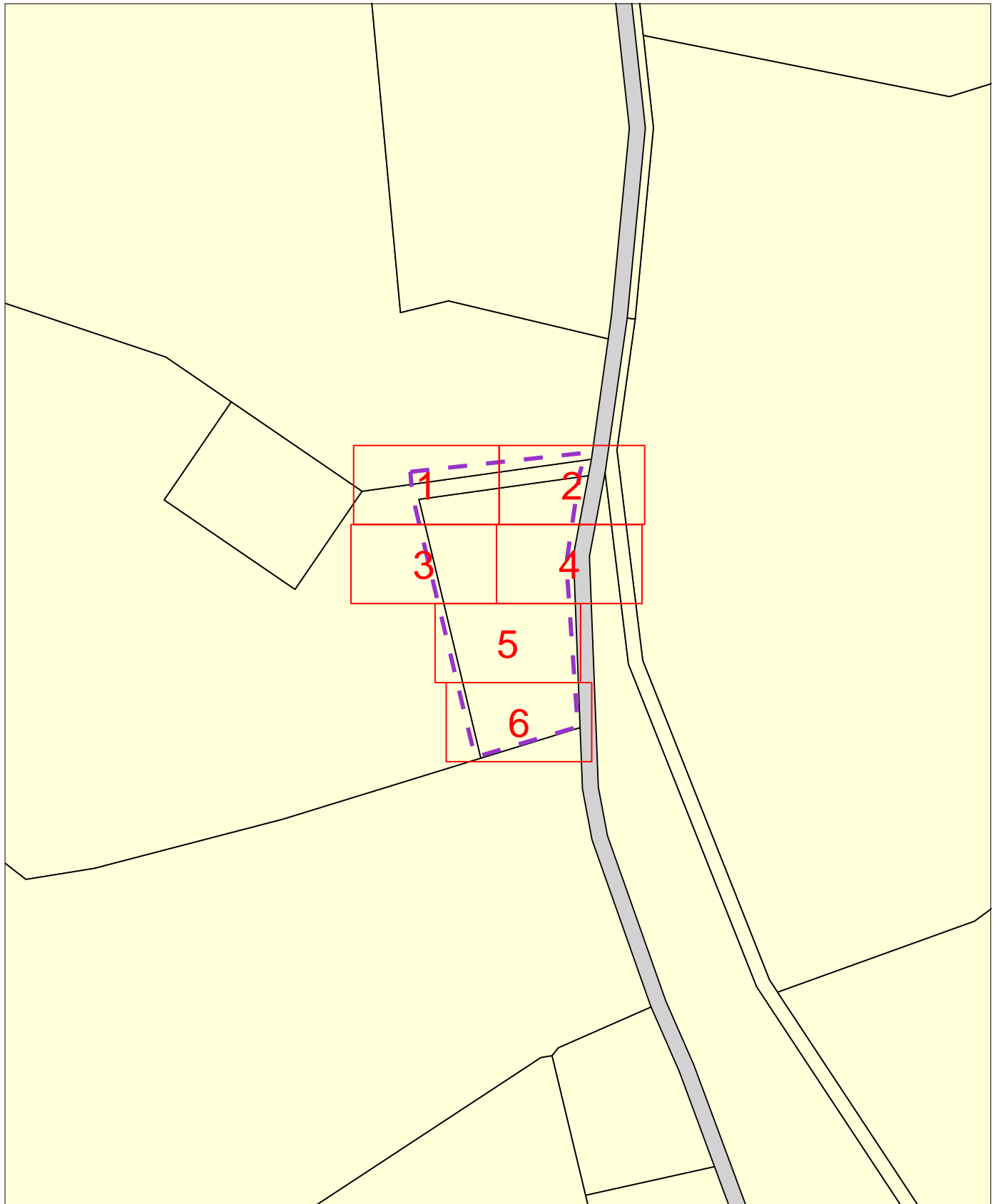
To the fullest extent permitted by law:

- (a) all conditions and guarantees concerning the Information (whether as to quality, outcome, fitness, care, skill or otherwise) expressed or implied by statute, common law, equity, trade, custom, usage or otherwise are expressly excluded and to the extent such conditions and guarantees cannot be excluded, HWC's liability is limited to either of the following (as nominated by HWC):
 - i. HWC supplying the Information to you again; or
 - ii. HWC paying you the cost of having the Information supplied to you again.
- (b) HWC is not responsible for and you release HWC from any actions, liabilities, losses, damages, costs, claims, expenses, injuries or other claims whatsoever (including loss of revenue, use, production, goodwill, profit, business, contract, anticipated savings, financing costs, increased operating costs or other purely financial, economic, special or indirect loss or damage) arising out of:
 - i. your access to or use of the Information;
 - ii. any delay in HWC providing you with Information;
 - iii. your reliance on the Information or its inability to meet your needs;
 - iv. your failure to correctly or accurately:
 - (1) submit relevant or valid data to BYDA; or
 - (2) use or interpret Information provided to you by HWC; or
 - v. any failure, interruption or corruption of any Information;
- (c) you must indemnify HWC and its employees, agents and officers from and against all actions, liabilities, losses, damages, costs, claims, expenses, injuries and other claims arising out of or in connection with HWC providing you with incorrect or incomplete Information; and you assume all risk associated with your use of BYDA and HWC's websites and you release BYDA and HWC from and against all actions, liabilities, losses, damages, costs, claims, expenses, injuries or other claims which may arise in respect of such usage.



Overview Map

Sequence No: 216218233
309 Chichester Dam Road Bendolba



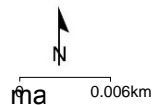
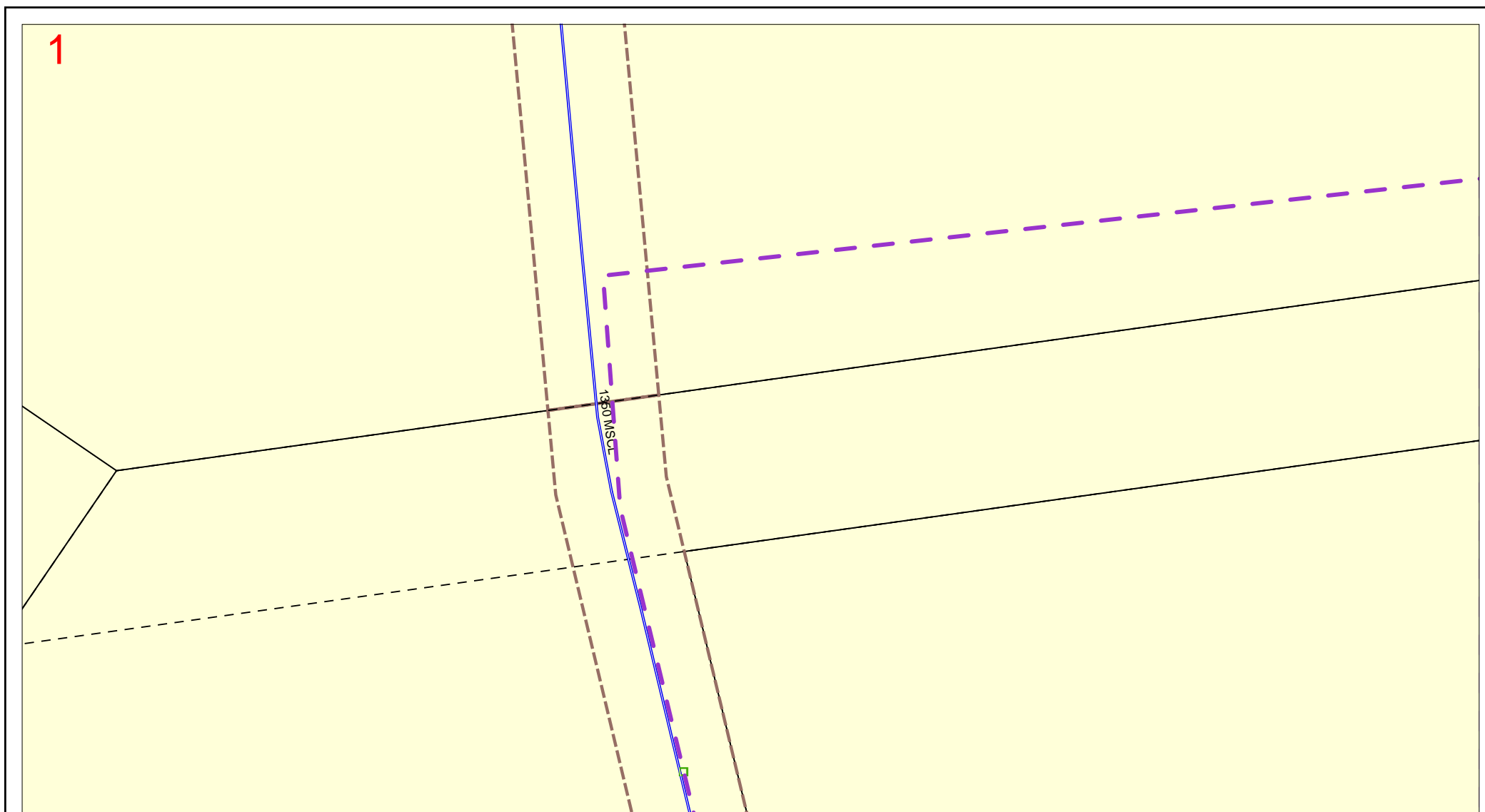
LEGEND:

- 1** Detail Map
-  BYDADIA Work Area



Map 1

Sequence No: 216218233



IMPORTANT

THIS PLAN IS NOT TO BE USED FOR CONVEYANCING

THIS INFORMATION IS VALID FOR 30 DAYS FROM THE DATE OF ISSUE

SEWER/WATER/RECYCLED WATER/
ELECTRICAL - UTILITY DATA
© HUNTER WATER CORPORATION 2019

SERVICE LOCATIONS ARE APPROXIMATE.
HAND DIG UNTIL ACTUAL LOCATIONS ARE IDENTIFIED.
PROPERTY SERVICES ARE NOT SHOWN.

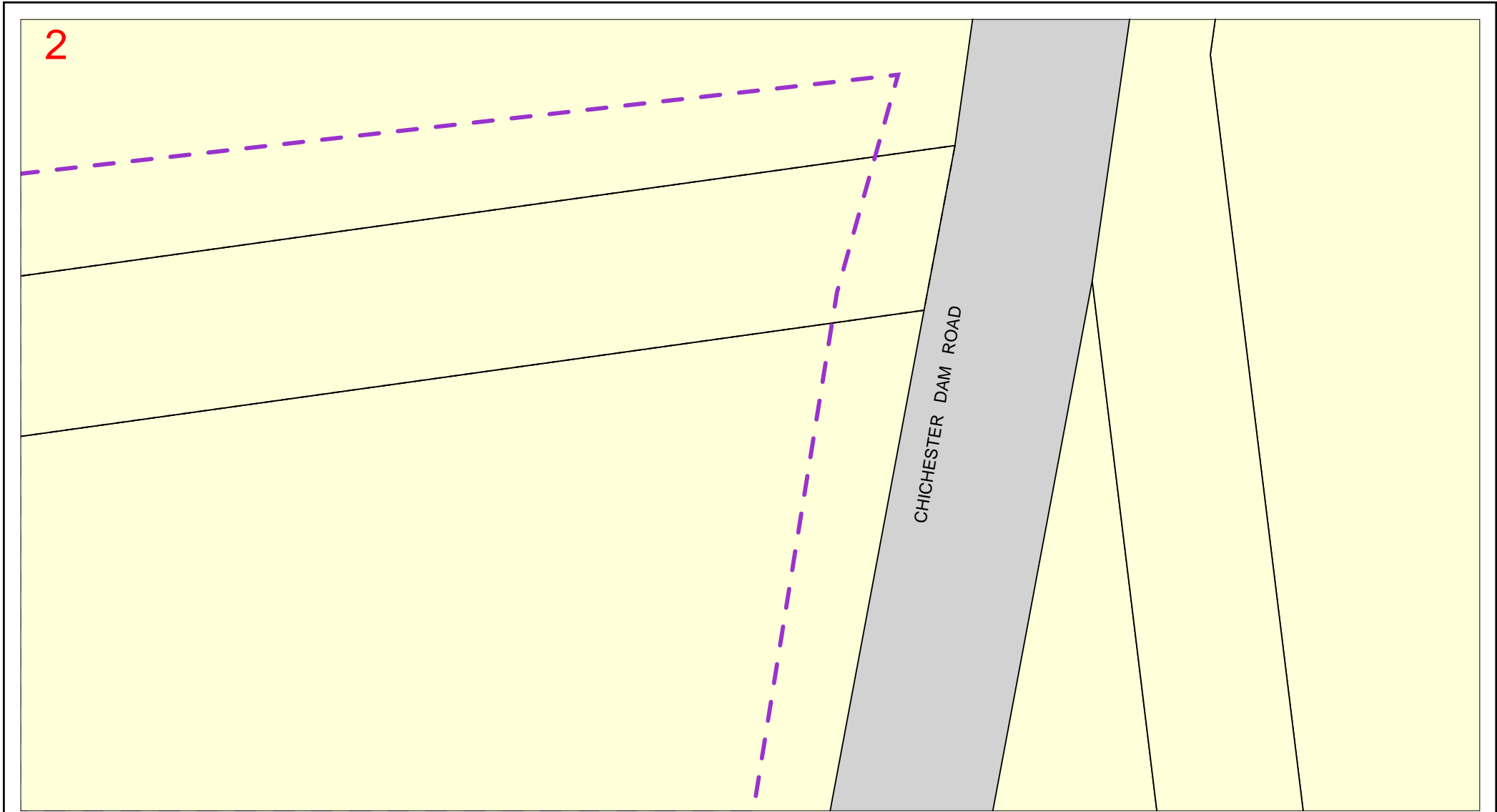
ANY INFORMATION ON THIS PLAN MAY NOT BE UP TO DATE
AND THE CORPORATION ACCEPTS NO RESPONSIBILITY FOR
ITS ACCURACY.

CADASTRAL DATA © Department Finance, Services & Innovation
[Nov 2017]



Map 2

Sequence No: 216218233

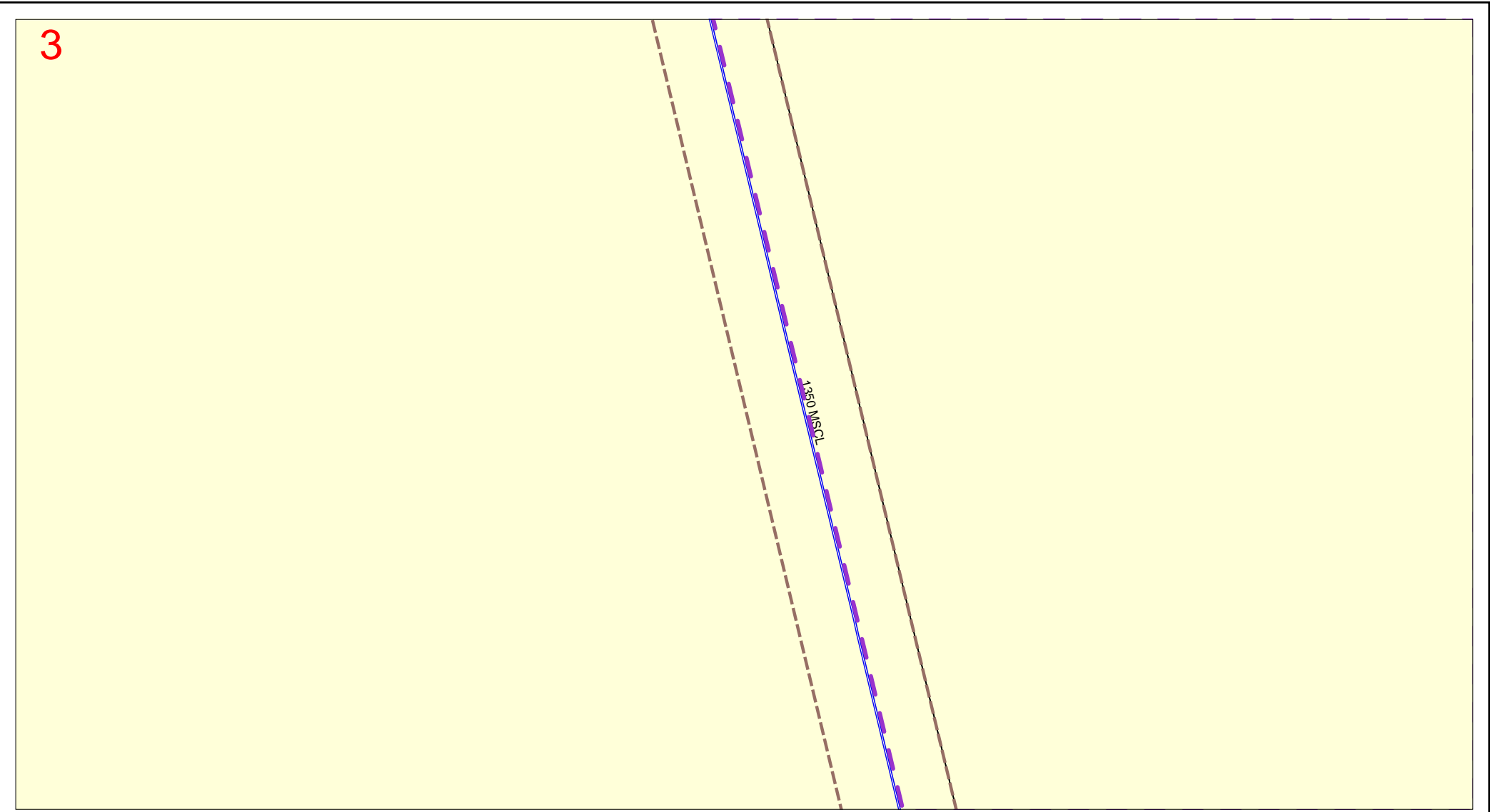


	<p>IMPORTANT</p> <p>THIS PLAN IS NOT TO BE USED FOR CONVEYANCING</p> <p>THIS INFORMATION IS VALID FOR 30 DAYS FROM THE DATE OF ISSUE</p>	<p>SEWER/WATER/RECYCLED WATER/ ELECTRICAL - UTILITY DATA © HUNTER WATER CORPORATION 2019</p> <p>SERVICE LOCATIONS ARE APPROXIMATE. HAND DIG UNTIL ACTUAL LOCATIONS ARE IDENTIFIED. PROPERTY SERVICES ARE NOT SHOWN.</p>	<p>ANY INFORMATION ON THIS PLAN MAY NOT BE UP TO DATE AND THE CORPORATION ACCEPTS NO RESPONSIBILITY FOR ITS ACCURACY.</p> <p>CADASTRAL DATA © Department Finance, Services & Innovation [Nov 2017]</p>
--	--	---	--



Map 3

Sequence No: 216218233

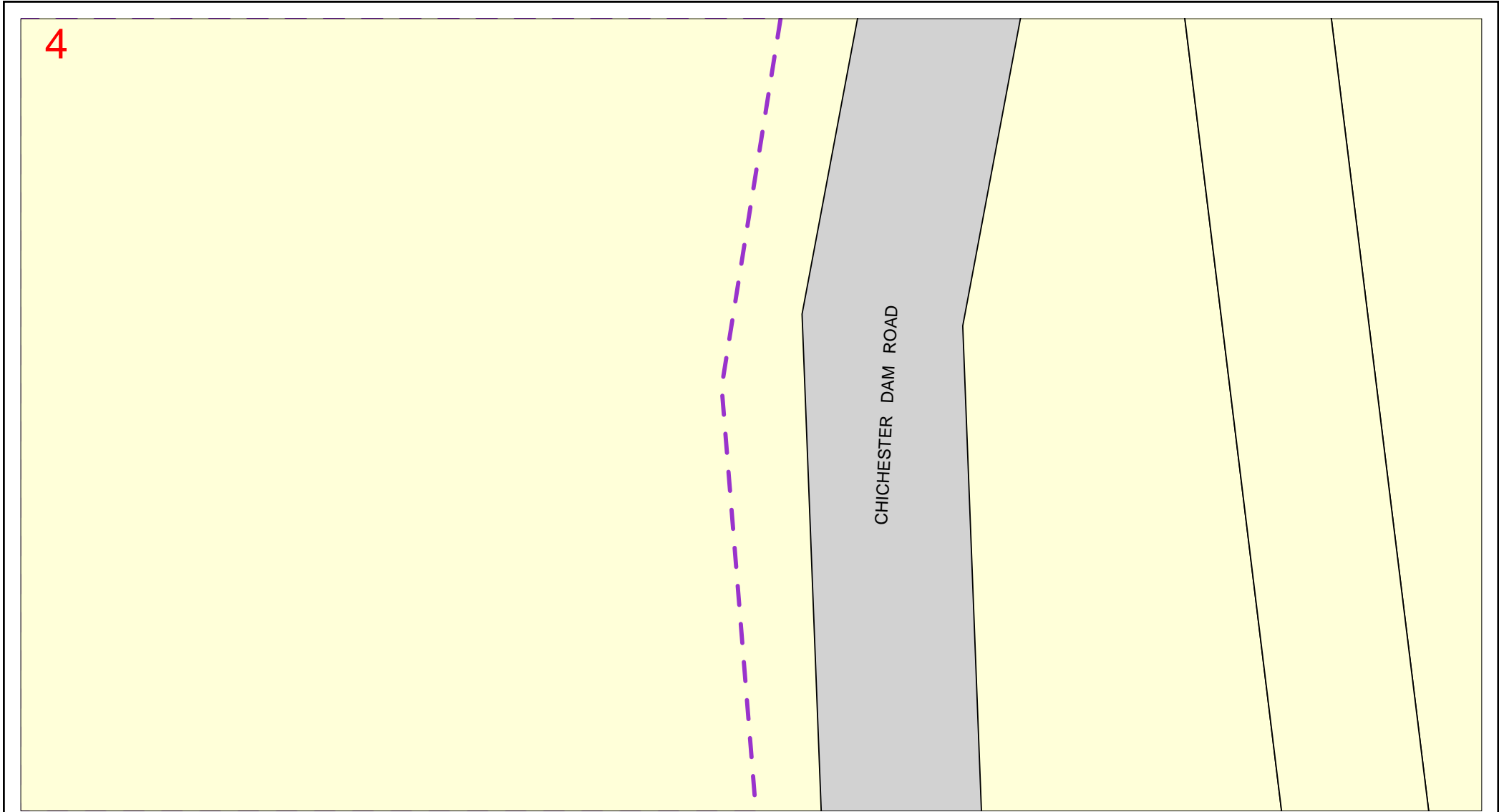


	<p>IMPORTANT</p> <p>THIS PLAN IS NOT TO BE USED FOR CONVEYANCING</p> <p>THIS INFORMATION IS VALID FOR 30 DAYS FROM THE DATE OF ISSUE</p>	<p>SEWER/WATER/RECYCLED WATER/ ELECTRICAL - UTILITY DATA © HUNTER WATER CORPORATION 2019</p> <p>SERVICE LOCATIONS ARE APPROXIMATE. HAND DIG UNTIL ACTUAL LOCATIONS ARE IDENTIFIED. PROPERTY SERVICES ARE NOT SHOWN.</p>	<p>ANY INFORMATION ON THIS PLAN MAY NOT BE UP TO DATE AND THE CORPORATION ACCEPTS NO RESPONSIBILITY FOR ITS ACCURACY.</p> <p>CADASTRAL DATA © Department Finance, Services & Innovation [Nov 2017]</p>
--	--	---	--



Map 4

Sequence No: 216218233

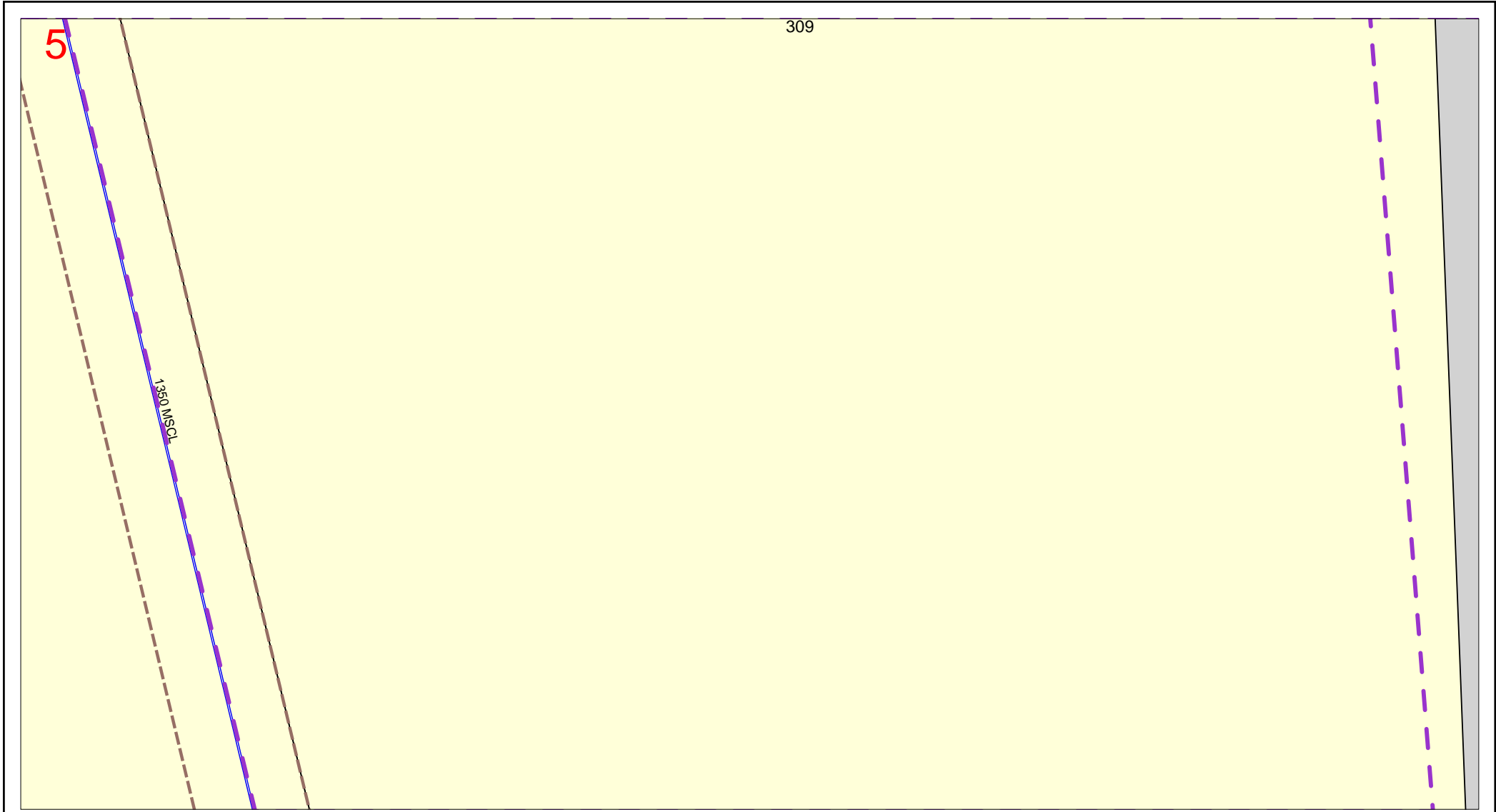


	<p>IMPORTANT</p> <p>THIS PLAN IS NOT TO BE USED FOR CONVEYANCING</p> <p>THIS INFORMATION IS VALID FOR 30 DAYS FROM THE DATE OF ISSUE</p>	<p>SEWER/WATER/RECYCLED WATER/ ELECTRICAL - UTILITY DATA © HUNTER WATER CORPORATION 2019</p> <p>SERVICE LOCATIONS ARE APPROXIMATE. HAND DIG UNTIL ACTUAL LOCATIONS ARE IDENTIFIED. PROPERTY SERVICES ARE NOT SHOWN.</p>	<p>ANY INFORMATION ON THIS PLAN MAY NOT BE UP TO DATE AND THE CORPORATION ACCEPTS NO RESPONSIBILITY FOR ITS ACCURACY.</p> <p>CADASTRAL DATA © Department Finance, Services & Innovation [Nov 2017]</p>
--	--	---	--



Map 5

Sequence No: 216218233

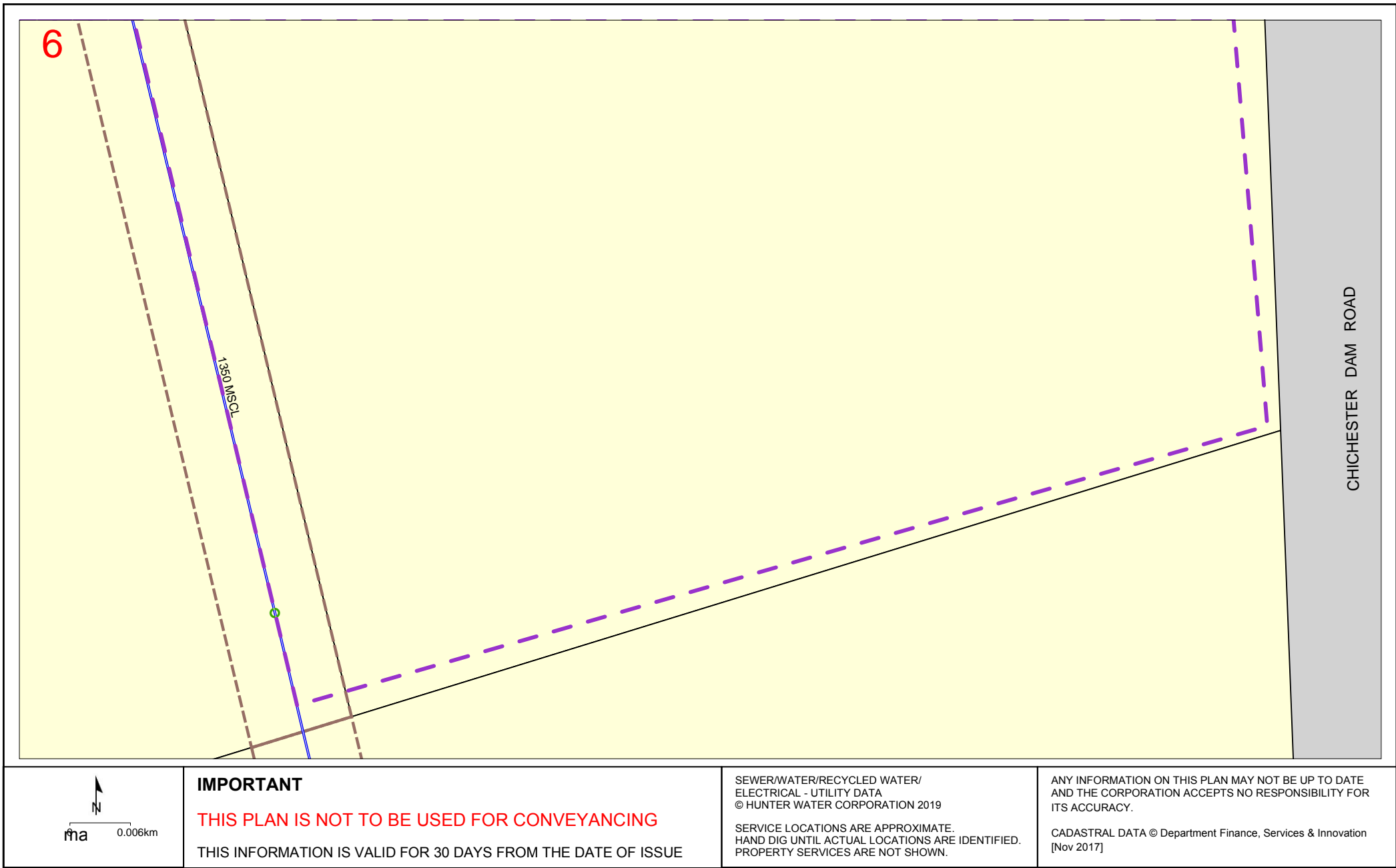


	<p>IMPORTANT</p> <p>THIS PLAN IS NOT TO BE USED FOR CONVEYANCING</p> <p>THIS INFORMATION IS VALID FOR 30 DAYS FROM THE DATE OF ISSUE</p>	<p>SEWER/WATER/RECYCLED WATER/ ELECTRICAL - UTILITY DATA © HUNTER WATER CORPORATION 2019</p> <p>SERVICE LOCATIONS ARE APPROXIMATE. HAND DIG UNTIL ACTUAL LOCATIONS ARE IDENTIFIED. PROPERTY SERVICES ARE NOT SHOWN.</p>	<p>ANY INFORMATION ON THIS PLAN MAY NOT BE UP TO DATE AND THE CORPORATION ACCEPTS NO RESPONSIBILITY FOR ITS ACCURACY.</p> <p>CADASTRAL DATA © Department Finance, Services & Innovation [Nov 2017]</p>
--	--	---	--



Map 6

Sequence No: 216218233



Hunter Water Corporation DBYD Asset Legend

Electrical Assets	Water Assets		RecycledWater Assets	Sewer Assets	StormWater Assets	Land Details
High Voltage	Contol Valve	HWC Rain Gauge	Air Valve	Air Valve	StormWater Assets	Area of Interest
Low Voltage	Hydrant Control Valve	HWC Stream Flow Gauge	Reflux Valve Open	Stop/Butterfly/Ball Valve	StormWater Network Structure	Easement Non HWC
Electrical Pole	Reflux Valve	Radio Base	Stop Valve Open	Gate Valve	StormWater Mains	Fence Line
Distribution Transformer	Stop/Scour Valve	Weather Station	RecycledWater Hydrant	Manhole	Mains Abandon	Non-HWC Easement
Air Break Switch	Tee & Stop Valve	Piezometer	Cluster Box	Cap		HWC Easement
Circuit Breaker	Hydrant	Bore Site	End Cap	Dead End		Parcel
High Voltage	Cluster Box		Flushing Tap	Flushing Tank		Road
Low Voltage	End Cap		Manhole	H&V Bend		Water Parcels
	Flushing Tap		Scour	Junction Connection		Hazardous Material
	Manhole		RecycledWater Meter	Outfall		Map Sheet Index
	Scour		RecycledWater Network Structure	Overflow		
	Water Meter		Other Main	Sewer/Valve Pit		
	Water Network Structure		Reticulation Main	Tangent Point		
	Other Main		Reticulation Main Encased/Conduit	Sewer Meter		
	Trunk Main		Trunk Main	Sewer Vent		
	Reticulation Main		Trunk Main Encased/Conduit	Sewer Network Structure		
	Water Encased Mains		RecycledWater Encased Mains	Other Main		
	Water Prelaid Service		RecycledWater Prelaid Service	Gravity Main		
				Pressure/Vacuum Main		
				Effluent Main		
				Outfall		
				Overflow Main		
				Rising Main		
				Sewer Encased Mains		



CABLE/PIPE LOCATION

Assets were found in the search area

COMPANY NAME:	Not supplied
ATTENTION:	Peta Harris
SEARCH LOCATION:	309 Chichester Dam Road Bendolba NSW 2420
SEQUENCE NO:	216218232
DATE:	Wednesday, 21 September 2022

Provision of Plans:

Please find enclosed plans depicting approximate locations of **Essential Energy** assets in the search location. **The excavator must not assume that there may not be assets owned by other network operators in the search location.**

Underground assets searched for	Underground assets found
Essential Energy Electrical	<input checked="" type="checkbox"/>
Essential Energy Water & Sewerage	<input type="checkbox"/>

Plans are updated from time to time to record changes to underground assets and may be updated by Essential Energy without notice. In the event that excavation does not commence within 28 days of receipt of a plan, a new plan should be obtained.

The excavator must retain the plans on site for the duration of the works.

The excavator shall report all damage made to Essential Energy assets immediately. Note that damage includes gouges, dents, holes and gas escapes.

**IN CASE OF EMERGENCY OR TO REPORT DAMAGE:
PHONE 13 20 80**

DISCLAIMER

Please be aware that plans may **not** reflect alterations to surface levels or the position of roads, buildings, fences etc. **Cable and pipe locations are approximate** and the plans are **not** suitable for scaling purposes. *Essential Energy does not retain plans for privately-owned underground electrical or water & sewerage assets located on private property. Privately-owned underground electrical assets located on private property are the responsibility of the owner.*

The plans have been prepared for Essential Energy's sole use and benefit. **Essential Energy cannot and does not warrant the accuracy or completeness of the plans.** Essential Energy supplies them at no cost with the object of reducing the serious risk of unintentional damage being caused to its cables and pipes. **Essential Energy does not accept any responsibility for any omissions, inaccuracies or errors in the plans, or any reliance place on the material. Any reliance placed on any plan provided in response to your request is at your own risk.**



Essential Energy retains all intellectual and industrial property rights which exists or may exist in or with respect to the plan(s). The material provided is not to be copied or distributed beyond you.

You release Essential Energy from and against all claims, demands, actions and proceedings arising out of or in any way related to the use of the provided material.

Location of Assets on Site:

The plans indicate only that cables and pipes may exist in the general vicinity – they do not pinpoint the exact location of the cables and pipes.

If it is found that the location of cables or pipes on the plans can be improved, please notify Essential Energy on 13 23 91 (or fax 1800 354 636).

All individuals have a duty of care they must observe when working in the vicinity of underground cables and pipes. It is the **excavator's responsibility to visually expose the underground cables and pipes manually, ie. by using hand-held tools and non-destructive pot-holing techniques prior to any mechanical excavation**. The excavator will be held responsible for all damage caused to the Essential Energy network or cables and pipes, and for the costs associated with the repair of any such damage. The excavator will also be held responsible for all damage caused to any persons.

When digging in the vicinity of underground assets, persons should observe the requirements of the applicable Codes of Practice published by the NSW Work Cover Authority or Safe Work Australia, and any amendments from time to time by the Authorities, including although not limited to:

- Excavation Work
- Managing Electrical Risks in the workplace
- How to manage and control asbestos in the workplace

(Please refer to <https://www.workcover.nsw.gov.au/law-and-policy/legislation-and-codes/codes-of-practice>).

When digging in the vicinity of **electrical assets** persons should observe the requirements of the **Electricity Supply Act 1995**.

Persons excavating near live underground electrical reticulation and/or earthing cables **must exercise extreme caution at all times and adhere to the requirements of Essential Energy's Electrical Safety Rules**. (These are available on our website: <http://www.essentialenergy.com.au/content/safety-community> and include

- **Work near Essential Energy's Underground Assets:**
<http://www.essentialenergy.com.au/asset/cms/pdf/contestableWorks/CEOP8041.pdf> , and
- **Asbestos Fact Sheet:**
<http://www.essentialenergy.com.au/asset/cms/pdf/safety/AsbestosFactSheet.pdf>

In some situations these procedures call for work to be performed by authorised staff.

Should there be any doubt as to the exact location of any underground electrical assets, and the potential for conflict with live underground cables caused by excavation at your work site, you should contact

13 23 91 to arrange for an on-site visit by an Essential Energy representative. No construction or mechanical excavation work is to commence prior to this on-site visit and approval being obtained.

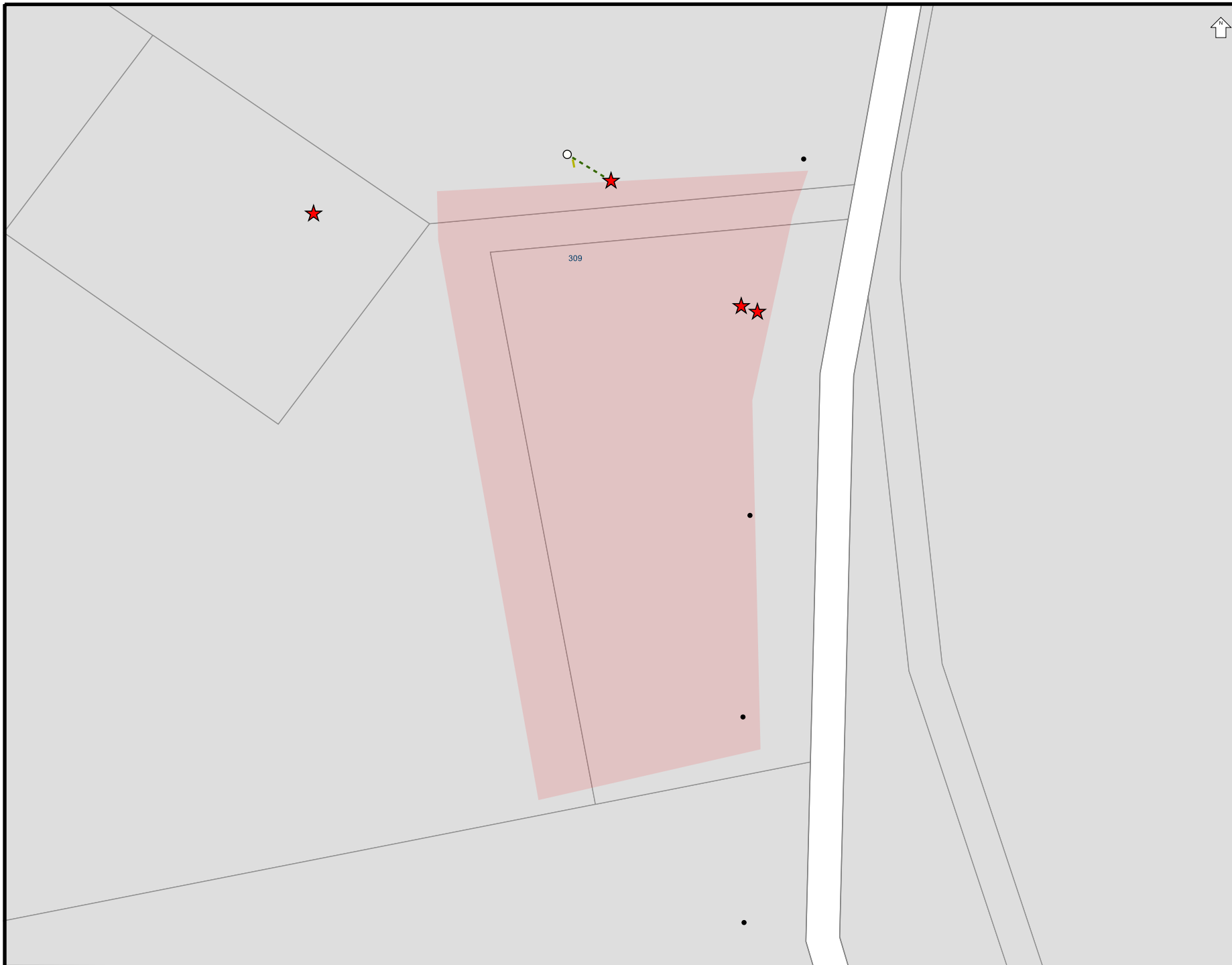
When digging in the vicinity of **water or sewer assets** persons should observe the requirements of the **Water Management Act 2000**.

Should there be any doubt as to the exact location of any underground water and sewer assets, and the potential for conflict with underground water and sewer pipes caused by excavation at your work site, you should contact **13 23 91** to arrange for an on-site visit. No construction or excavation work is to commence prior to this on-site visit and approval being obtained.

Prior Notification:

Please note that for excavation depths greater than 250mm near power poles and stays you should allow for **advance notice** in your construction program to permit Essential Energy time to allocate the necessary field resources to carry out the inspection at the site a **minimum of fourteen (14) working days prior to work commencing**. This service may incur a fee and this can be negotiated with the local Area Coordinator at the time of making the appointment. Failure to give reasonable notice to the local Area Coordinator may result in disruption to Essential Energy's planned works program in the district and could incur an extra charge over and above the normal rate for this service.

For further information please call 13 23 91.



Overhead wires not shown
LOOK UP & LIVE!

LEGEND

- LV Underground Cable
- HV Underground Cable
- Underground Pipe
- ★ Underground Earth or Wires
- ▲ Ground Substation
- Pole
- ⊠ Cubicle
- Pit
- Area of Interest

Critical Assets

Contact Essential Energy
on 13 23 91

- Zone Substation
- Underground Cable
- Underground Fibre

Proposed Works

- Area of proposed works

Proposed assets are shown as
orange symbols

THE INFORMATION ON THIS
MAP MAY NOT BE
ACCURATE.
If details are
incorrect, please
notify
Essential Energy on
13 23 91
(or fax 1800 354 636)

ISSUE DATE: 21/09/2022

You must resubmit your
request if you have not
started work within 4 weeks
of the 'Issue Date' above

A4 SCALE: 1:3039



Telstra DBYD Data Extraction

For non-ground breaking activities -

***Planning and design, conveyancing, tendering, educational or research, other data gathering**

Note - The supply of any Telstra data for non ground breaking activities is at Telstra's discretion. Data supply may be refused on commercial, privacy, security or other reasons.

*Planning and design requests submitted by identified utilities intending works on their own assets ***may** be exempt from the \$120 (GST inc) extraction fee for Standard Telstra Responses for non ground breaking activities. This is at Telstra's discretion and conditions may apply. Data extraction fees for all non standard responses however will still apply. Eg for large projects or non standard formats.

The supply of any data for non ground breaking activities is not subject to a 48hr response time; however Telstra will endeavour to respond within 48hrs for all standard responses. Please contact us directly for any urgent requests.

Standard Telstra Response - for non ground breaking activities \$120 (GST inc)

Criteria - Each request only requires a single delivery from Telstra (as in 1 request 1 Delivery).

A single delivery is either -

- **1 x Email with 1 x PDF map file** containing one or two A3 map pages (depending on network). Covers areas up to approx 500m in size.
- or-
- **1 x Email with 1 x DWF map file.** Covers areas up to approx 3km in size.
- or-
- **1 x *Posted delivery.-** (*only if email unavailable or at Telstra's discretion)

Posted is either -

- Posted softcopy of standard response on disk
- or-
- Posted printed hardcopy – maximum of 2 x A3 sheets only.

Non-Standard Response – for non ground breaking activities (fees apply)

Data Use Agreement (required for DXF format) **\$360** (GST inc)

Projects - If a response takes more than 30mins to extract data in any format will be at an hourly rate **(\$240** per hour GST inc).

- Projects that take 1 day or longer will be quoted individually.
- (All data will be provided in softcopy only - not printed).

Note - Multiple part requests through DBYD for one project will be amalgamated and considered a single project for data extraction charging purposes. Posted responses cannot be delivered within 48hrs, allow several days for delivery. Postage is by Australia Post standard delivery. Express delivery at additional cost. All prices and specifications are subject to change.

Telstra DBYD Data Extraction

For ground breaking activities -

***Manual or mechanical excavation, horizontal boring, vertical boring, blasting**

Standard Telstra Response – for ground breaking activities

cost to requestor - \$nil

Criteria - Each request only requires a single delivery from Telstra (as in 1 request 1 delivery).

A single delivery is defined as either -

- **1 x Email with 1 x PDF map file** containing one or two A3 map pages (depending on network). *Covers up to approx 500m.*

or-

- **1 x Email with 1 x DWF map file.** *Covers up to approx 3km.*

or-

- **1 x *Posted delivery** for customers requesting a response for their principal place of residence only, (and only when email delivery is unavailable or at Telstra's discretion).

Either -

- Posted printed hardcopy (A3 sheets only- at Telstra's discretion)

Non-Standard Telstra Response – for ground breaking activities (fees apply)

An extraction fee is incurred if the response exceeds a standard response i.e. -

- Use of data requires a data use agreement (for example DXF format)
- If an individual job or project requires more than a single delivery (as defined above)
- Specific printing and/or posting of requests that are not for the principle place of residence
- Any other response other than a Standard Telstra Response for ground breaking activities

Data extraction costs for ground breaking activities -

- Posted hardcopy of standard response i.e. when not principle place of residence – max of 2 x A3 sheets (at legible scale) - **\$120** GST inc. Note - large areas will not be printed and posted.
- Requires Data Use Agreement – i.e. requirement for DXF files - **\$360** (GST inc)
- Non standard response over 30 mins extraction time for softcopy will be at an hourly rate (**\$240 per hour** GST inc).
- Projects that take 1 day or longer will be quoted individually.

Note - Multiple part requests through DBYD for one project will be amalgamated and considered a single project for data extraction charging purposes. Printing/posting fee exemptions may be provided at Telstra's discretion. Postage is by Australia Post standard delivery. All posted plans will normally be extracted within 48 hrs; time in transit through post is additional and may take several days Express delivery at additional cost. All prices and specifications are subject to change. Data extraction fees are based on various criteria including the principal excavation activity selected by the customer on the DBYD website. Telstra reserves the right to vary its fees in circumstances where the principal excavation activity is varied or misrepresented by the customer.